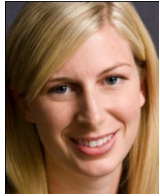


KATHERINE MOLINEUX

Director



Katherine Molineux leads a diversity of projects from conception to realization. Katherine specializes in interpretative planning, content development, project coordination and management.

An experienced project manager, Katherine has led several high profile and complex exhibition development projects that involved multiple museum departments, external stakeholders, subject matter experts, community members, artists, contractors and more. She works hard to bring team members together and employs both formal and informal processes to ensure deadlines are met while various perspectives are considered and accounted for. As an interpretive planner, Katherine strives to develop interpretive plans and exhibitions that connect people to their natural and culture heritage in a meaningful way. She listens carefully and works closely with museum staff, stakeholders, scholars, designers, and fabricators to create relevant and responsive experiences.

Katherine is a contributing author on the topics of exhibition development and interpretive planning, including *The Manual of Museum Exhibitions*, 2nd ed. and the *The Manual of Museum Learning*, 2nd ed., in addition to numerous speaking engagements and articles.

Katherine honoured in History, receiving a Bachelor of Arts degree, and a Master of Arts degree in History from the University of Western Ontario. Prior to joining Lord Cultural Resources, Katherine worked for several museums in both Canada and the United States, developing and delivering programs to visitors of all ages and backgrounds. Her museum experience has given her insight into the needs and interests of the visitor, as well as museum staff.